

**HUMAN MACHINE INTERFACE
SYSTEM CONTROLLERS HMI-T5/HMI-T10.
BECAUSE NETWORKED SYSTEMS REQUIRE
INTELLIGENT WORKFLOWS.**

HMI-T5: SYSTEM CONTROLLER FOR LINEAR SEAM WELDERS AND COMPACT WELDING SYSTEMS.

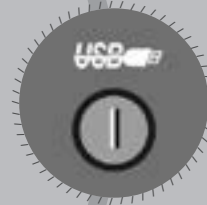
Efficient control panel for clamping benches and compact linear and circular seam welding systems. Depending on the application up to 2 power sources and 5 positioning axes can be controlled simultaneously.

The 5.7 inch touch display offers convenience, intuitive user interface and simple programming using a visual process and parameter representation.

GRAPHICAL USER INTERFACE
5,7" TOUCH-DISPLAY



UP TO
2 POWER SOURCES
CONTROLLABLE



USB-PORT
SAVING AND LOADING OF
PROGRAMS

5
AXES
MAX.



LINEAR WELDING SYSTEM
3 AXES



CIRCULAR WELDING SYSTEM
5 AXES



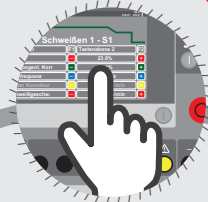
MULTI WELDING SYSTEM
4 AXES

HMI-T10: SYSTEM CONTROLLER FOR COMPLEX WELDING SYSTEMS.

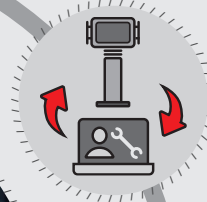
/ High end control panel for the universal use in almost all areas of mechanized welding. At the same time, the powerful hardware allows you to control up to 4 power sources and 10 positioning axes simultaneously.

The large 10.4 inch touch display offers maximum user comfort, intuitive user guidance and easy programming through visual process and parameter representation.

**GRAPHICAL USER INTERFACE
10,4" TOUCH-DISPLAY**



**REMOTE CONTROL
HMI-RC**



**REMOTE MAINTENANCE
INTERNET (VPN)**



**UP TO
4 POWER SOURCES
CONTROLLABLE**

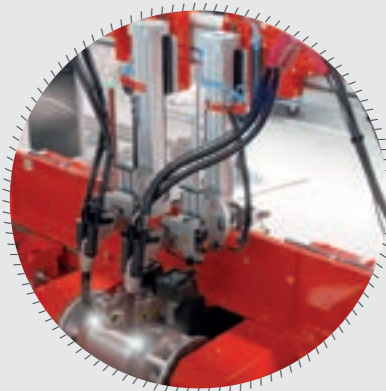


**USB-PORT
SAVING AND LOADING OF
PROGRAMS**

**10
AXES
MAX.**



**LINEAR WELDING SYSTEM
10 AXES**



**CIRCULAR WELDING SYSTEM
9 AXES**



**MULTI WELDING SYSTEM
7 AXES**

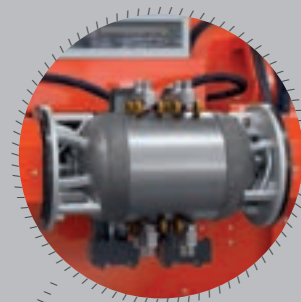
NETWORKING INTELLIGENCE. 100% PRECISION & CONTROL.



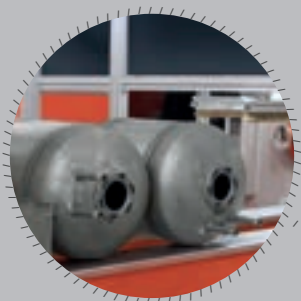
/ Kinematics



/ Welding process



/ Clamping devices



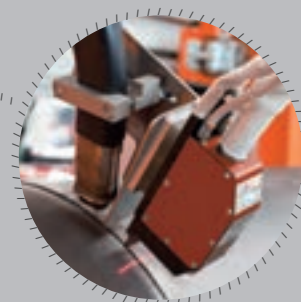
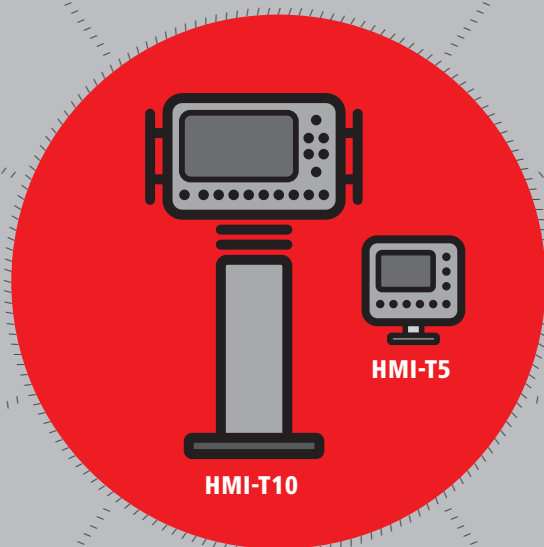
/ Workpiece handling



/ Security systems



/ Camera



/ Seam tracking system



/ Remote maintenance



/ Programming



/ Data documentation



VISUALIZATION
STANDARD T5 / T10

- / Graphical parameter display.
- / Simple menu guidance.
- / Visual display of processes.



Q-MASTER LIMITS
OPTION T5 / STANDARD T10

- / The Q-Master software enables a simple monitoring and control of the welding data with previously set warning or error limits.



PROGRAM CYCLE
STANDARD T5 / T10

- / Intuitive program and menu item selection via program editor or handwheel.
- / Manual operation.
- / Automatic operation.



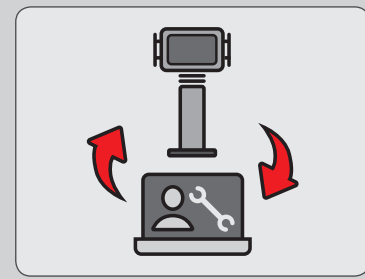
AXES TRAVEL
STANDARD T5 / T10

- / Start/parking position set.
- / Set a driven position as starting or parking position („teach“ button).



PARAMETER MODIFICATION
STANDARD T5 / T10

- / Modifications in the finished weld program using the program editor.
- / Quick access to the settings pages in automatic mode.



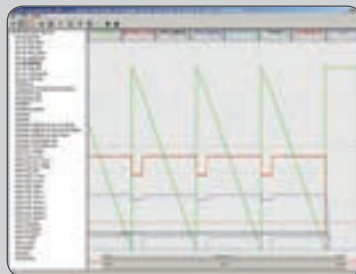
REMOTE MAINTENANCE
OPTION T5 / STANDARD T10

- / Remote maintenance via Internet (VPN).
- / Data exchange via FTP.

Time	Pos. [mm]	Speed [mm/min]	Voltage [V]	Current [A]	Wire [mm/min]	Weld [mm/min]	PEAK [V/mm]	PEAK [A/mm]	C-GR [mm]
12:00:12.7	17.6	15.1	12.7	145	12.1	79	6.2	11	1.1
12:00:13.0	20.8	15.2	12.8	145	12.1	79	6.2	11	1.2
12:00:13.3	24.0	15.1	12.8	144	12.1	79	6.1	11	1.3
12:00:13.6	27.2	15.2	12.9	144	12.0	80	6.1	11	1.0
12:00:13.9	30.4	15.1	12.9	144	12.0	80	6.0	11	1.0
12:00:14.2	33.6	15.2	12.9	145	12.0	80	6.0	11	1.0
12:00:14.5	36.8	15.0	12.9	145	12.0	79	6.0	11	1.0
12:00:14.8	40.0	15.0	12.8	145	11.9	79	5.9	11	1.0
12:00:15.1	43.2	14.9	12.8	146	11.8	79	5.9	11	1.0
12:00:15.4	46.4	14.8	12.8	146	11.8	80	5.9	11	1.0
12:00:15.7	49.6	14.9	12.8	146	11.8	81	6.0	11	1.0
12:00:16.0	52.8	15.0	12.8	145	11.7	81	6.1	11	1.0
12:00:16.3	56.0	15.1	12.8	145	11.7	80	6.1	11	1.0
12:00:16.6	59.2	15.1	12.8	145	11.7	79	6.1	11	1.0
12:00:16.9	62.4	15.1	12.8	145	11.7	80	6.2	11	1.0
12:00:17.2	65.6	15.1	12.9	145	11.7	80	6.2	11	1.0
12:00:17.5	68.8	15.0	12.9	145	11.7	80	6.2	11	1.0
12:00:17.8	72.0	15.1	12.9	145	11.7	80	6.2	11	1.0

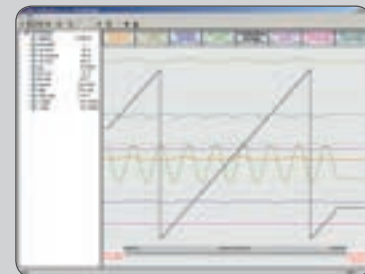
AVR
(ACTUAL VALUE RECORDING)
OPTION T5 / T10

- / The AVR software extension enables the storage (HDD, USB, FTP) of target and is limited to a .txt file in tabular display.



DATAVIEWER
(OFFLINE) EXTENSION FOR AVR
OPTION T5 / T10

- / The DataViewer PC software allows the import of AVR generated .txt files. The graphical representation of the parameter enables a clear analysis.



DATALOGGER
(ONLINE) EXTENSION FOR AVR
OPTION T5 / T10

- / The DataLogger PC software allows a more accurate display of a higher sampling rate (50 ms). The data recording is carried out directly on the PC – a live view of the current parameters is possible.

REMOTE CONTROL HMI-RC, OPTIONAL FOR HMI-T10.

/ Operating, visualization and parameter correction – conveniently on-site. The ergonomic and robust remote control provides access to all relevant functions. Due to compact and lightweight design the device lies comfortably in your hand.

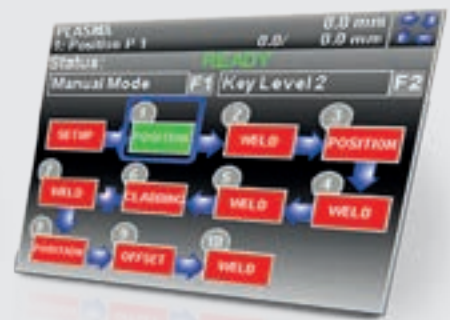
Its high resolution and bright color display ensures perfect readability under all lighting conditions.



/ AXES TRAVEL



/ PARAMETER MODIFICATION



/ PROGRAM CYCLE



/ Light and robust housing

/ 3,4" colour display

/ Emergency stop and 3 step enable button

/ Loop handle, device bracket and holding magnet

/ 23 functional buttons with LED lighting

/ Exchangeable labelling stripes

/ Removable connection cable

/ Plug & Play

EQUIPMENT.

	HMI-T5	HMI-T10
Positioning axes control	max. 5	max. 10
Power sources control	max. 2	max. 4
Axis assignment configurable (positioning or welding axis)	S	S
Welding processes: MIG-MAG / CMT / TIG / PLASMA	S	S
Full control of all the welding parameters	S	S
Touch-Display	5,7"	10,4"
Parameter input via interactive control panel („touch display“)	S	S
Parameter input via rotary wheel	–	S
Graphical parameter display	S	S
USB interface (save / download / archive)	S	S
Sequence freely definable (number of max. steps)	11	23
Number of storable programs in internal program memory	100	500
3 levels of permissions (administrator / supervisor / operator) with password login	S	S
High reliability (EMC/HF compatible)	S	S
Robust control housing - mounted stationary	S	–
Robust control housing on castors with adjustable tilt angle	–	S
Central main switch on control cabinet	S	S
Emergency stop	S	S
Control on/off button	S	S
Start/stop button	S	S
Error reset button	S	S
Preset terminal or remote control	–	S
Fault indication list and archive	S	S
Language selection	S	S
Diagnostic and service page	S	S
Machine and system parameters	S	S
Forming gas / purging gas on/off/time	S	S
Forming gas / purging gas control valve Argon	–	O
Software Q-Master limits (welding data monitoring)	O	S
Software AVR (Actual Value Recording)	O	O
Software Dataviewer (extension for E-kit AVR)	O	O
Software Datalogger	O	O
Remote control for set-up and correction function during automatic mode	–	O
Remote Maintenance	O	S

„S“ = series, „O“ = option, „–“ = not available for this model.

/ We want to inform you, that the mentioned software packages are designed exclusively for process data monitoring and recording of the available parameters and do not replace a weld seam inspection.

THREE BUSINESS UNITS, ONE GOAL: TO SET THE STANDARD THROUGH TECHNOLOGICAL ADVANCEMENT.

What began in 1945 as a one-man operation now sets technological standards in the fields of welding technology, photovoltaics and battery charging. Today, the company has around 5,660 employees worldwide and 1,321 patents for product development show the innovative spirit within the company. Sustainable development means for us to implement environmentally relevant and social aspects equally with economic factors. Our goal has remained constant throughout: to be the innovation leader.

PERFECT WELDING

Our mission is Perfect Welding; a task we have approached with passion and skill for decades in order that our customers can join materials with the perfect weld seam. With our outstanding technologies and services and together with our customer's applications, not only do we solve their specific welding technology problems, but we also make a substantial contribution to increasing their productivity.

SOLAR ENERGY

Our mission is to achieve 24 hours of sun. Day after day we are hard at work turning this vision of a future in which 100% of the world's energy needs are covered by renewable sources into a reality. We are therefore concentrating on solutions to intelligently, efficiently and economically generate, store, distribute and consume solar energy.

PERFECT CHARGING

As know-how leaders in the world of battery charging, we deliver exceptional solutions to create the maximum benefit for our customers. For the intralogistics sector, we are committed to energy flow optimisation for electric forklift trucks and are constantly striving for the next innovation. Our powerful charging systems for vehicle workshops guarantee safe and reliable processes.

Further information about all Fronius products and our global sales partners and representatives can be found at www.fronius.com

Fronius Canada Ltd.
2875 Argentia Road, Units 4,5 & 6
Mississauga, ON L5N 8G6
Canada
Telephone +1 905 288-2100
Fax +1 905 288-2101
sales.canada@fronius.com
www.fronius.ca

Fronius USA LLC
6797 Fronius Drive
Portage, IN 46368
USA
Telephone +1 877 FRONIUS
sales.usa@fronius.com
www.fronius-usa.com

Fronius UK Limited
Maidstone Road, Kingston
Milton Keynes, MK10 0BD
United Kingdom
Telephone +44 1908 512 300
Fax +44 1908 512 329
info-uk@fronius.com
www.fronius.co.uk

Fronius International GmbH
Froniusplatz 1
4600 Wels
Austria
Telephone +43 7242 241-0
Fax +43 7242 241-953940
sales@fronius.com
www.fronius.com